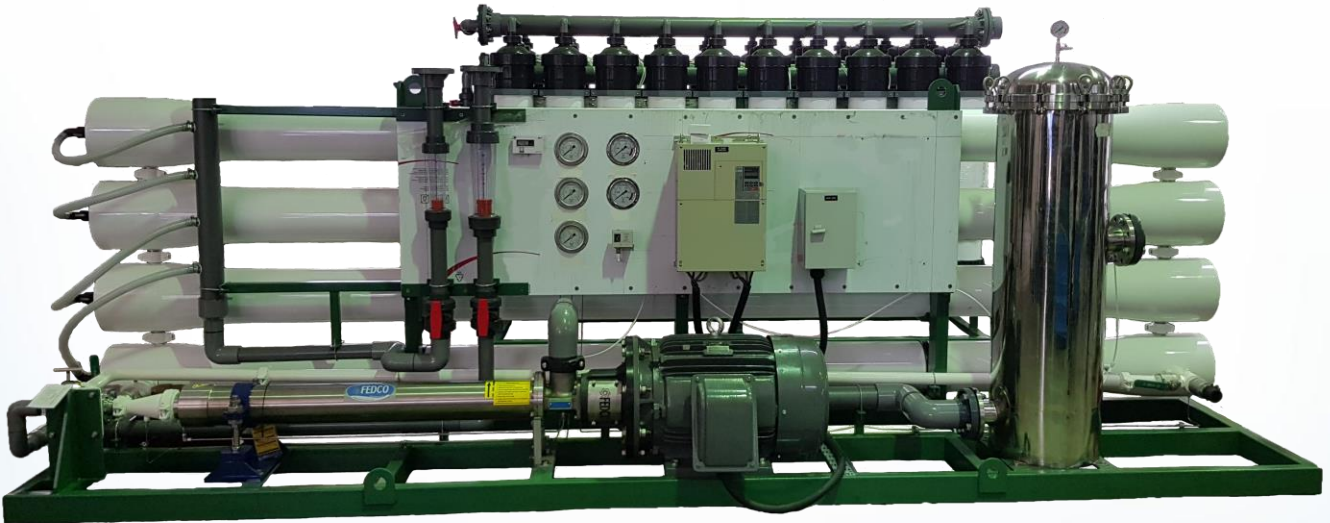


# CERAFLO® SEAWATER REVERSE OSMOSIS SYSTEM

## SWRO200 (200m<sup>3</sup>/day)



### System includes:

- 4 x RO housing
- 16 x RO8040 Seawater cartridge
- 20 x U850 Ultrafiltration cartridge
- 1 x 20 elements 5 µm Microfiltration cartridge
- Electrical control panel with PLC and D.O.L. / Frequency-Controller
- Feed and Hi-Pressure Pumps
- Manual & Electrical Solenoid Control Valve
- Pressure Gauges, Flow Meters
- Permeate Conductivity Meter
- System on Racking, PVC & Stainless Steel Piping
- C.I.P tank

### SWRO System & Operating Limit :

Product Flow-rate	200 m <sup>3</sup> /day
Operating Temperature	< 50° C
Operating Pressure	< 70 Bar
Electrical Power	45 kW, 86 A
Max. Recovery	35 ~ 45 %*
pH range	3 – 10
Feed Max. Turbidity	< 5.0 NTU*
Chlorine Concentration	< 0.1ppm

\* Subject to feed water condition

### Membrane Specifications :

Type	TFC (Thin Film Composite)
Material	PA (Polyamide)
Charge	Negative
Configuration	Spiral-Wound, FRP Wrapping
Membrane Size	Diameter 8" x Length 40"
Effective Area	365 sq ft/membrane
Flow Rate	0.7 m <sup>3</sup> /hr/membrane

Note: Ceraflo Pte Ltd reserves the right to make any changes to the information provided above without prior notice